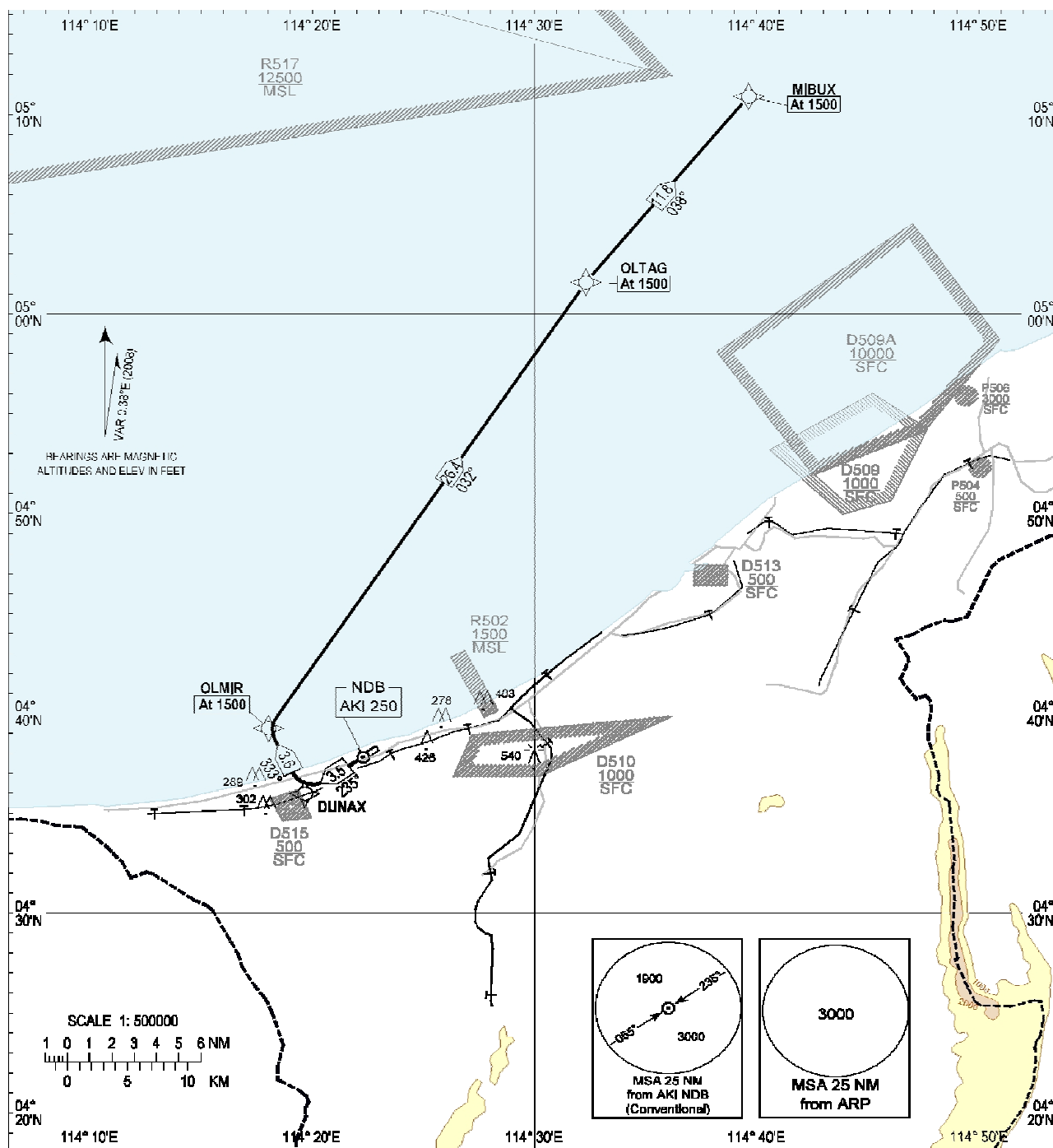


**STANDARD DEPARTURE CHART  
INSTRUMENT (SID)**

TRANSITION ALTITUDE  
11000ft

TWR 122.10

**ANDUKI  
RNAV (GNSS)  
RWY 23**



**Routing**  
DER23-DUNAX[A1500-,R]-OLMIR[A1500,R]-OLTAG[A1500,R]-MIBUX[A1500]

**Notes**

1. Close-in obstacles exist for RWY 23 departures.
2. For obstacle clearance, climb at 5.0% (minimum) to 1500' AMSL.
3. Critical nav aids: Nil.
4. All waypoints are fly-by.
5. All positions are referenced to WGS84 datum.

**DEPARTURE END RWY 23**

AK23D 043759.40N 1142232.88E

**WAYPOINTS**

DUNAX	043558.71N	1141940.37E
OLMIR	043914.40N	1141801.19E
OLTAG	050135.28N	1143218.83E
MIBUX	051053.70N	1143938.41E